

Bassoon - 12 Major Scales and Arpeggios

C

F

Bb

Eb

Ab

Db

Gb

B

E

A

D

G

*Bassoon - Minor and Chromatic Scales*

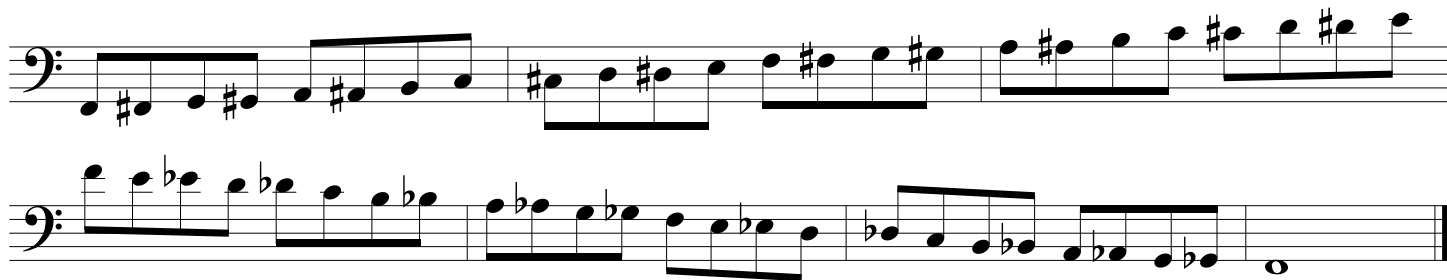
*C Harmonic Minor*



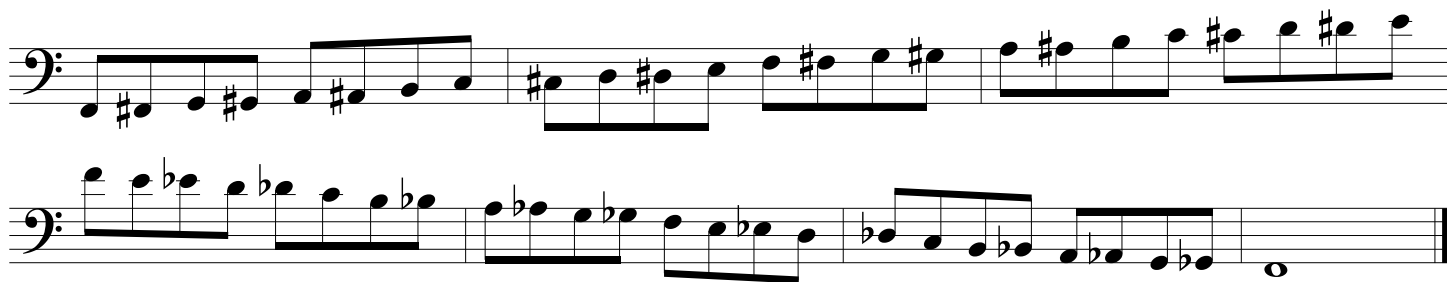
*A Melodic Minor*



*All-State Chromatic*



*Chromatic - 2 Octaves*



*Bassoon - Clark Studies*

*C* Musical staff for C instrument, bass clef, C major key signature. The staff contains a sequence of eighth notes in a descending scale, starting on G4 and ending on C3, with a final whole note C3.

*F* Musical staff for F instrument, bass clef, F major key signature. The staff contains a sequence of eighth notes in a descending scale, starting on G4 and ending on C3, with a final whole note C3.

*Bb* Musical staff for Bb instrument, bass clef, Bb major key signature. The staff contains a sequence of eighth notes in a descending scale, starting on G4 and ending on C3, with a final whole note C3.

*Eb* Musical staff for Eb instrument, bass clef, Eb major key signature. The staff contains a sequence of eighth notes in a descending scale, starting on G4 and ending on C3, with a final whole note C3.

*Ab* Musical staff for Ab instrument, bass clef, Ab major key signature. The staff contains a sequence of eighth notes in a descending scale, starting on G4 and ending on C3, with a final whole note C3.

*Db* Musical staff for Db instrument, bass clef, Db major key signature. The staff contains a sequence of eighth notes in a descending scale, starting on G4 and ending on C3, with a final whole note C3.

*Gb* Musical staff for Gb instrument, bass clef, Gb major key signature. The staff contains a sequence of eighth notes in a descending scale, starting on G4 and ending on C3, with a final whole note C3.

*B* Musical staff for B instrument, bass clef, B major key signature. The staff contains a sequence of eighth notes in a descending scale, starting on G4 and ending on C3, with a final whole note C3.

*E* Musical staff for E instrument, bass clef, E major key signature. The staff contains a sequence of eighth notes in a descending scale, starting on G4 and ending on C3, with a final whole note C3.

*A* Musical staff for A instrument, bass clef, A major key signature. The staff contains a sequence of eighth notes in a descending scale, starting on G4 and ending on C3, with a final whole note C3.

*D* Musical staff for D instrument, bass clef, D major key signature. The staff contains a sequence of eighth notes in a descending scale, starting on G4 and ending on C3, with a final whole note C3.

*G* Musical staff for G instrument, bass clef, G major key signature. The staff contains a sequence of eighth notes in a descending scale, starting on G4 and ending on C3, with a final whole note C3.

Bassoon - Thirds

C

Musical staff for C instrument, featuring a bass clef and a key signature of one flat (Bb). The staff contains a sequence of eighth and sixteenth notes, primarily moving in an ascending and then descending pattern.

F

Musical staff for F instrument, featuring a bass clef and a key signature of one flat (Bb). The staff contains a sequence of eighth and sixteenth notes, primarily moving in an ascending and then descending pattern.

Bb

Musical staff for Bb instrument, featuring a bass clef and a key signature of two flats (Bb, Eb). The staff contains a sequence of eighth and sixteenth notes, primarily moving in an ascending and then descending pattern.

Eb

Musical staff for Eb instrument, featuring a bass clef and a key signature of three flats (Bb, Eb, Ab). The staff contains a sequence of eighth and sixteenth notes, primarily moving in an ascending and then descending pattern.

Ab

Musical staff for Ab instrument, featuring a bass clef and a key signature of four flats (Bb, Eb, Ab, Db). The staff contains a sequence of eighth and sixteenth notes, primarily moving in an ascending and then descending pattern.

Db

Musical staff for Db instrument, featuring a bass clef and a key signature of five flats (Bb, Eb, Ab, Db, Gb). The staff contains a sequence of eighth and sixteenth notes, primarily moving in an ascending and then descending pattern.

Gb

Musical staff for Gb instrument, featuring a bass clef and a key signature of five flats (Bb, Eb, Ab, Db, Gb, Bb). The staff contains a sequence of eighth and sixteenth notes, primarily moving in an ascending and then descending pattern.

B

Musical staff for B instrument, featuring a bass clef and a key signature of two sharps (F#, C#). The staff contains a sequence of eighth and sixteenth notes, primarily moving in an ascending and then descending pattern.

E

Musical staff for E instrument, featuring a bass clef and a key signature of three sharps (F#, C#, G#). The staff contains a sequence of eighth and sixteenth notes, primarily moving in an ascending and then descending pattern.

A

Musical staff for A instrument, featuring a bass clef and a key signature of three sharps (F#, C#, G#, D#). The staff contains a sequence of eighth and sixteenth notes, primarily moving in an ascending and then descending pattern.

D

Musical staff for D instrument, featuring a bass clef and a key signature of two sharps (F#, C#). The staff contains a sequence of eighth and sixteenth notes, primarily moving in an ascending and then descending pattern.

G

Musical staff for G instrument, featuring a bass clef and a key signature of one sharp (F#). The staff contains a sequence of eighth and sixteenth notes, primarily moving in an ascending and then descending pattern.