

Oboe - 12 Major Scales and Arpeggios

C

Musical notation for the C major scale and arpeggio. The scale is written in treble clef, 4/4 time, starting on middle C. The arpeggio is a C major triad (C-E-G) with a whole note duration.

F

Musical notation for the F major scale and arpeggio. The scale is written in treble clef, 4/4 time, starting on F4. The arpeggio is an F major triad (F-A-C) with a whole note duration.

Bb

Musical notation for the Bb major scale and arpeggio. The scale is written in treble clef, 4/4 time, starting on Bb4. The arpeggio is a Bb major triad (Bb-D-F) with a whole note duration.

Eb

Musical notation for the Eb major scale and arpeggio. The scale is written in treble clef, 4/4 time, starting on Eb4. The arpeggio is an Eb major triad (Eb-G-Bb) with a whole note duration.

Ab

Musical notation for the Ab major scale and arpeggio. The scale is written in treble clef, 4/4 time, starting on Ab4. The arpeggio is an Ab major triad (Ab-C-Eb) with a whole note duration.

Db

Musical notation for the Db major scale and arpeggio. The scale is written in treble clef, 4/4 time, starting on Db4. The arpeggio is a Db major triad (Db-F-Ab) with a whole note duration.

Gb

Musical notation for the Gb major scale and arpeggio. The scale is written in treble clef, 4/4 time, starting on Gb4. The arpeggio is a Gb major triad (Gb-Bb-Db) with a whole note duration.

B

Musical notation for the B major scale and arpeggio. The scale is written in treble clef, 4/4 time, starting on B4. The arpeggio is a B major triad (B-D-F#) with a whole note duration.

E

Musical notation for the E major scale and arpeggio. The scale is written in treble clef, 4/4 time, starting on E4. The arpeggio is an E major triad (E-G#-B) with a whole note duration.

A

Musical notation for the A major scale and arpeggio. The scale is written in treble clef, 4/4 time, starting on A4. The arpeggio is an A major triad (A-C#-E) with a whole note duration.

D

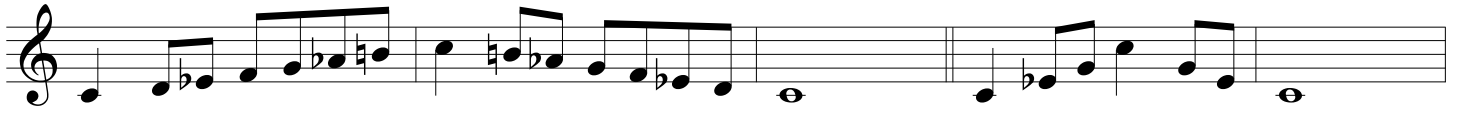
Musical notation for the D major scale and arpeggio. The scale is written in treble clef, 4/4 time, starting on D4. The arpeggio is a D major triad (D-F#-A) with a whole note duration.

G

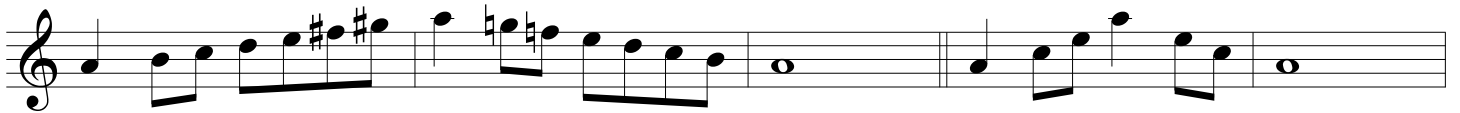
Musical notation for the G major scale and arpeggio. The scale is written in treble clef, 4/4 time, starting on G4. The arpeggio is a G major triad (G-B-D) with a whole note duration.

Oboe - Minor and Chromatic Scales

*C Harmonic Minor*



*A Melodic Minor*



*All-State Chromatic*



*Chromatic - 2 Octaves*



Oboe - Clark Studies

C  Musical staff for C major scale, starting on middle C (C4) and ascending to C5. The scale is written in treble clef with a key signature of one flat (Bb).

F  Musical staff for F major scale, starting on F4 and ascending to F5. The scale is written in treble clef with a key signature of one flat (Bb).

Bb  Musical staff for Bb major scale, starting on Bb4 and ascending to Bb5. The scale is written in treble clef with a key signature of two flats (Bb, Eb).

Eb  Musical staff for Eb major scale, starting on Eb4 and ascending to Eb5. The scale is written in treble clef with a key signature of three flats (Bb, Eb, Ab).

Ab  Musical staff for Ab major scale, starting on Ab4 and ascending to Ab5. The scale is written in treble clef with a key signature of four flats (Bb, Eb, Ab, Db).

Db  Musical staff for Db major scale, starting on Db4 and ascending to Db5. The scale is written in treble clef with a key signature of five flats (Bb, Eb, Ab, Db, Gb).

Gb  Musical staff for Gb major scale, starting on Gb4 and ascending to Gb5. The scale is written in treble clef with a key signature of six flats (Bb, Eb, Ab, Db, Gb, Cb).

B  Musical staff for B major scale, starting on B4 and ascending to B5. The scale is written in treble clef with a key signature of two sharps (F#, C#).

E  Musical staff for E major scale, starting on E4 and ascending to E5. The scale is written in treble clef with a key signature of three sharps (F#, C#, G#).

A  Musical staff for A major scale, starting on A4 and ascending to A5. The scale is written in treble clef with a key signature of three sharps (F#, C#, G#).

D  Musical staff for D major scale, starting on D4 and ascending to D5. The scale is written in treble clef with a key signature of two sharps (F#, C#).

G  Musical staff for G major scale, starting on G4 and ascending to G5. The scale is written in treble clef with a key signature of one sharp (F#).

Oboe - Thirds

C



Musical staff for C instrument, featuring a treble clef and a key signature of one flat (Bb). The staff contains a sequence of eighth and sixteenth notes.

F



Musical staff for F instrument, featuring a treble clef and a key signature of one flat (Bb). The staff contains a sequence of eighth and sixteenth notes.

Bb



Musical staff for Bb instrument, featuring a treble clef and a key signature of two flats (Bb, Eb). The staff contains a sequence of eighth and sixteenth notes.

Eb



Musical staff for Eb instrument, featuring a treble clef and a key signature of three flats (Bb, Eb, Ab). The staff contains a sequence of eighth and sixteenth notes.

Ab



Musical staff for Ab instrument, featuring a treble clef and a key signature of four flats (Bb, Eb, Ab, Db). The staff contains a sequence of eighth and sixteenth notes.

Db



Musical staff for Db instrument, featuring a treble clef and a key signature of five flats (Bb, Eb, Ab, Db, Gb). The staff contains a sequence of eighth and sixteenth notes.

Gb



Musical staff for Gb instrument, featuring a treble clef and a key signature of six flats (Bb, Eb, Ab, Db, Gb, Cb). The staff contains a sequence of eighth and sixteenth notes.

B



Musical staff for B instrument, featuring a treble clef and a key signature of two sharps (F#, C#). The staff contains a sequence of eighth and sixteenth notes.

E



Musical staff for E instrument, featuring a treble clef and a key signature of three sharps (F#, C#, G#). The staff contains a sequence of eighth and sixteenth notes.

A



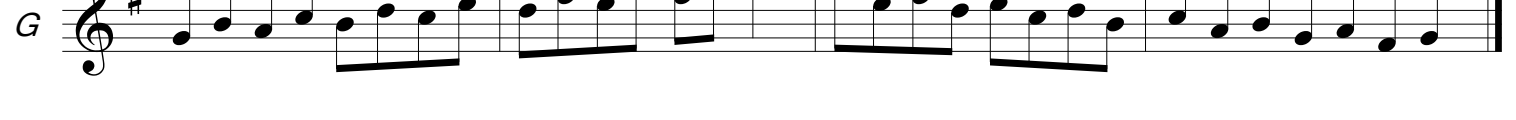
Musical staff for A instrument, featuring a treble clef and a key signature of four sharps (F#, C#, G#, D#). The staff contains a sequence of eighth and sixteenth notes.

D



Musical staff for D instrument, featuring a treble clef and a key signature of five sharps (F#, C#, G#, D#, A#). The staff contains a sequence of eighth and sixteenth notes.

G



Musical staff for G instrument, featuring a treble clef and a key signature of one sharp (F#). The staff contains a sequence of eighth and sixteenth notes.