

*Trumpet - 12 Major Scales and Arpeggios*

C



Musical notation for the C major scale in 4/4 time. The scale is written on a single staff in treble clef. It consists of two measures: the first measure contains the ascending scale (C4-D4-E4-F4-G4-A4-B4), and the second measure contains the descending scale (B4-A4-G4-F4-E4-D4-C4). The piece concludes with a double bar line.

F



Musical notation for the F major scale in 4/4 time. The scale is written on a single staff in treble clef with one flat (Bb). It consists of two measures: the first measure contains the ascending scale (F4-G4-A4-Bb4-C5-Bb4-A4-G4), and the second measure contains the descending scale (F4-G4-A4-Bb4-C5-Bb4-A4-G4). The piece concludes with a double bar line.

Bb



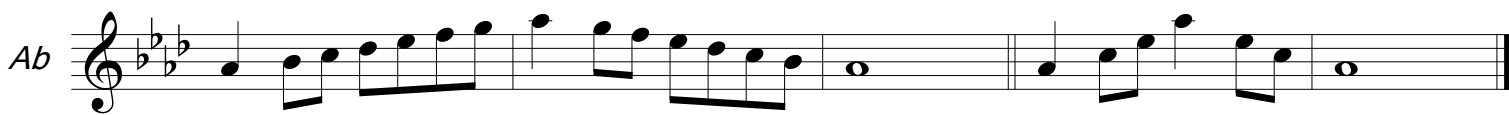
Musical notation for the Bb major scale in 4/4 time. The scale is written on a single staff in treble clef with two flats (Bb, Eb). It consists of two measures: the first measure contains the ascending scale (Bb4-C5-D5-Eb5-F5-Eb5-D5-C5), and the second measure contains the descending scale (Bb4-C5-D5-Eb5-F5-Eb5-D5-C5). The piece concludes with a double bar line.

Eb



Musical notation for the Eb major scale in 4/4 time. The scale is written on a single staff in treble clef with three flats (Bb, Eb, Ab). It consists of two measures: the first measure contains the ascending scale (Eb4-F5-G5-Ab5-Bb5-Ab5-G5-F5), and the second measure contains the descending scale (Eb4-F5-G5-Ab5-Bb5-Ab5-G5-F5). The piece concludes with a double bar line.

Ab



Musical notation for the Ab major scale in 4/4 time. The scale is written on a single staff in treble clef with four flats (Bb, Eb, Ab, Db). It consists of two measures: the first measure contains the ascending scale (Ab4-Bb5-C6-Db6-Eb6-Db6-C6-Bb5-Ab4), and the second measure contains the descending scale (Ab4-Bb5-C6-Db6-Eb6-Db6-C6-Bb5-Ab4). The piece concludes with a double bar line.

Db



Musical notation for the Db major scale in 4/4 time. The scale is written on a single staff in treble clef with five flats (Bb, Eb, Ab, Db, Gb). It consists of two measures: the first measure contains the ascending scale (Db4-Eb5-F6-Gb6-Ab6-Gb6-F6-Eb5-Db4), and the second measure contains the descending scale (Db4-Eb5-F6-Gb6-Ab6-Gb6-F6-Eb5-Db4). The piece concludes with a double bar line.

Gb



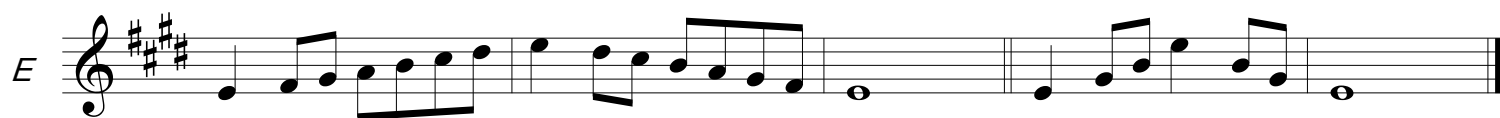
Musical notation for the Gb major scale in 4/4 time. The scale is written on a single staff in treble clef with six flats (Bb, Eb, Ab, Db, Gb, Cb). It consists of two measures: the first measure contains the ascending scale (Gb4-Ab5-B6-Cb6-Db6-Cb6-B6-Ab5-Gb4), and the second measure contains the descending scale (Gb4-Ab5-B6-Cb6-Db6-Cb6-B6-Ab5-Gb4). The piece concludes with a double bar line.

B



Musical notation for the B major scale in 4/4 time. The scale is written on a single staff in treble clef with two sharps (F#, C#). It consists of two measures: the first measure contains the ascending scale (B4-C#5-D#5-E#5-F#5-E#5-D#5-C#5), and the second measure contains the descending scale (B4-C#5-D#5-E#5-F#5-E#5-D#5-C#5). The piece concludes with a double bar line.

E



Musical notation for the E major scale in 4/4 time. The scale is written on a single staff in treble clef with four sharps (F#, C#, G#, D#). It consists of two measures: the first measure contains the ascending scale (E4-F#4-G#4-A#4-B5-A#4-G#4-F#4), and the second measure contains the descending scale (E4-F#4-G#4-A#4-B5-A#4-G#4-F#4). The piece concludes with a double bar line.

A



Musical notation for the A major scale in 4/4 time. The scale is written on a single staff in treble clef with three sharps (F#, C#, G#). It consists of two measures: the first measure contains the ascending scale (A4-B4-C#5-A4-B4-C#5-A4), and the second measure contains the descending scale (A4-B4-C#5-A4-B4-C#5-A4). The piece concludes with a double bar line.

D



Musical notation for the D major scale in 4/4 time. The scale is written on a single staff in treble clef with two sharps (F#, C#). It consists of two measures: the first measure contains the ascending scale (D4-E4-F#4-G4-A4-G4-F#4-E4), and the second measure contains the descending scale (D4-E4-F#4-G4-A4-G4-F#4-E4). The piece concludes with a double bar line.

G



Musical notation for the G major scale in 4/4 time. The scale is written on a single staff in treble clef with one sharp (F#). It consists of two measures: the first measure contains the ascending scale (G4-A4-B4-C#5-G4-A4-B4), and the second measure contains the descending scale (G4-A4-B4-C#5-G4-A4-B4). The piece concludes with a double bar line.

*Trumpet - Minor and Chromatic Scales*

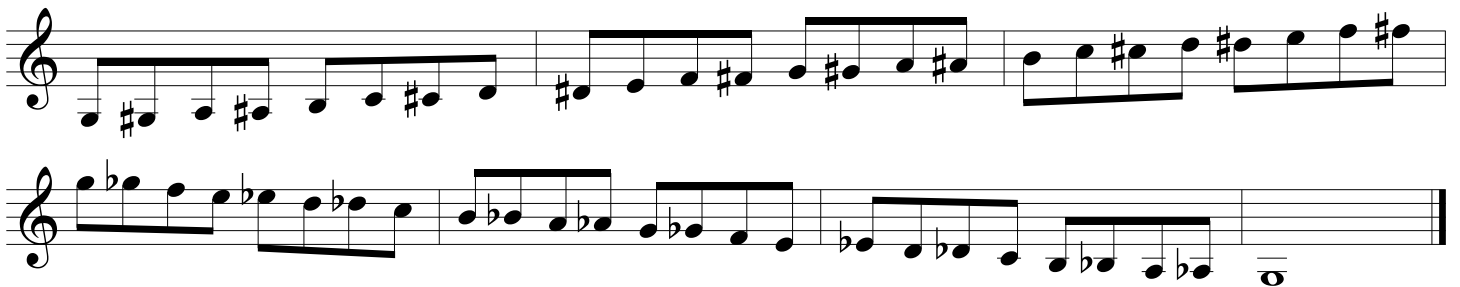
*C Harmonic Minor*



*A Melodic Minor*



*All-State Chromatic*



*Chromatic - 2 Octaves*



*Trumpet - Clark Studies*

*C* 

*F* 

*Bb* 

*Eb* 

*Ab* 

*Db* 

*Gb* 

*B* 

*E* 

*A* 

*D* 

*G* 

Trumpet - Thirds

C



Musical staff for C trumpet part, showing a sequence of eighth notes across four measures.

F



Musical staff for F trumpet part, showing a sequence of eighth notes across four measures.

Bb



Musical staff for Bb trumpet part, showing a sequence of eighth notes across four measures.

Eb



Musical staff for Eb trumpet part, showing a sequence of eighth notes across four measures.

Ab



Musical staff for Ab trumpet part, showing a sequence of eighth notes across four measures.

Db



Musical staff for Db trumpet part, showing a sequence of eighth notes across four measures.

Gb




Musical staff for Gb trumpet part, showing a sequence of eighth notes across four measures.

B



Musical staff for B trumpet part, showing a sequence of eighth notes across four measures.

E



Musical staff for E trumpet part, showing a sequence of eighth notes across four measures.

A



Musical staff for A trumpet part, showing a sequence of eighth notes across four measures.

D



Musical staff for D trumpet part, showing a sequence of eighth notes across four measures.

G



Musical staff for G trumpet part, showing a sequence of eighth notes across four measures.